

Spot & Stain Removal Procedure

General Stain Removal Procedures



1. Inspect to determine the source of the spot.
2. Test the carpet or fabric being treated with all spotting solutions that may be used for colorfastness before application.
3. Apply the spotting solution to the affected area sparingly and agitate the spotting solution with your spotting spatula.
4. Tamp the spotting solution (never rub) into the fibers using a tamping brush and a clean, absorbent white towel.
5. Allow the spotting solution adequate dwell time (usually two to three minutes).
6. Extract or blot the affected area with water to remove the spot and the spotting solution.

A. Common Water-Based Spots

IF SPOT IS WATER-BASED SUCH AS MANY FOOD AND BEVERAGES, CHOCOLATE, KETCHUP, SAUCES, ETC.

1. Apply Avenge
2. If spot persists, apply Protein Spotter
3. If stain (color) remains, go to System H or I



B. Coffee, Tea, Urine, Feces

1. Apply T.C.U. Neutralizer
2. If spot persists, apply Avenge
3. If stain (color) remains, go to System I



C. Grease or Oil-Based

IF SPOT IS GREASE OR OIL-BASED, SUCH AS: SALAD DRESSING, COSMETICS, TAR, ETC.

1. Apply All Solv, Solvent Clean or Citrus Solv
2. If spot persists apply P.I.G.
3. Next apply Solvent Clean as a solvent rinse
4. For combination water and oil based stains apply Avenge
5. If stain (color) remains, go to System H or I



D. Unknown

IF SPOT IS UNIDENTIFIABLE:

1. Apply All Solv or Solvent Clean
2. If spot persists, apply Avenge
3. If stain (color) remains, go to System H or I



E. Gum

1. Apply Gel Break
2. Agitate with Gum Getter
3. If spot persists, blot with Citrus Solv
4. If stain (color) remains, go to System H or I



F. Rust

1. Apply T-Rust
2. Agitate lightly and allow a few minutes dwell time
3. Extract with water



G. Ink

1. Apply Stain Zone around the ink stain to prevent spreading during treatment
2. Apply P.I.G.
3. Repeat to remove any remaining color pigment
4. Apply All Solv to rinse solvent
5. Apply Avenge to rinse
6. If stain (color) remains, go to System H or I



H. Artificial Colors and Dyes (Reducing Agent System)

FOR ALL TYPES OF FOOD AND BEVERAGE BASED STAIN INCLUDING CHILDRENS' FRUIT DRINKS.

1. Applying RedZONE is a two step process.
2. Clean stained area with extra dry passes (leave as dry as possible).
3. Apply Solution A liberally (saturate spray) to the stained area. Allow 20-30 seconds of dwell time.
4. Apply Solution B liberally (saturate spray) to the stained area.
5. Allow 20-30 seconds of dwell time and evaluate results. Many stains are removed simply by extracting the area thoroughly with clear water at this point. If residual discoloration remains, do not extract and go to next step.
6. Apply heat as accelerator with a wallpaper steamer or steam iron. Follow label instructions carefully!
7. When the stain has completely disappeared, extract with water. If a light yellow discoloration remains, simply let area dry without extraction and this discoloration usually goes away.



I. Natural Colors and Dyes (Oxidizer System)

FOR MUSTARD, FURNITURE, URINE AND OTHER ORGANIC DYE STAINS.

1. Always pretest for colorfastness in an inconspicuous area.
2. Clean discolored area thoroughly. Remove as much of the staining material as possible before applying StainZONE.
3. Apply and allow to dwell five to ten minutes.
4. Agitate and blot with clean white spotting towel.
5. Rinse and extract area thoroughly to remove as much of the stain and moisture as possible.
6. If any stain remains, apply StainZONE again. Allow to dry. Do not judge final results until solution has dried.
7. For mustard stains, consider prolonged exposure (20 minutes to four hours) to an ultraviolet light. (Note: When longer dwell times are required cover with plastic sheeting to prevent evaporation.)



Bridgepoint Professional Spotting Kit



This spotting kit has everything you need to remove the vast majority of even the most difficult stains! The new, insulated SoftSide bag has lots of room inside plus four large pockets yet is still compact and easy to carry. Plus, you get 30% more chemical than most kits.

FASTTRACK

BRIDGEPOINT SYSTEMS

Commercial CARPET

Maintenance Procedures Guide



Overview

Commercial carpet maintenance consists of four service protocols:

1. Initial/Preventative Maintenance

Preventative maintenance procedures should be employed virtually immediately after the carpet has been installed. Preventative maintenance includes placing soil and moisture capturing matting at the building entrances, and removing soils from outdoor walkways and parking lot areas to minimize soils tracking into the building.



2. Routine Maintenance

This is maintenance performed on a routine or daily basis. This would include vacuuming the carpet areas to remove any accumulation of dry, particulate soils that can damage carpet fibers, and cause the carpet to lose its luster or clean appearance. It would also include any routine spot removal.



3. Appearance (Interim) Maintenance

This level of maintenance is for when there is a slight buildup of soils missed by routine services, or when the amount or type of soil is not completely removed by even proper routine maintenance practices.



4. Restorative Maintenance

This type of maintenance is scheduled when the carpet has reached an unacceptable appearance level, when traffic patterns are easily visible, and soils and spills are causing the carpet condition to be a concern. Training and education of the cleaning professional is extremely important to be able to have this cleaning procedure restore the appearance and performance of the carpet to its maximum potential.

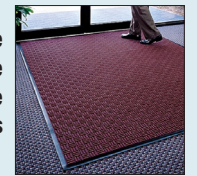


Preventative Maintenance

There are three key components to preventative maintenance:

1. Soil Collection/Walk off Mats

Place the proper matting inside and outside of any door or entrance for traffic into the building. Use appropriate matting for the soil type, soil level and weather conditions in your region.



2. Entry Area Sweeping and Maintenance

Be sure to have the outside apron and approaches into the entrances swept or power washed as often as needed to keep outdoor soils at bay and as far away from the entrances as possible.



3. New Carpet Considerations

With new carpet, vacuum thoroughly to remove any excess fiber content from the new installation. Also vacuum or pick up any small carpet scraps, loose fibers or backing materials before carpet is placed into use for traffic.



Contact Information

Bridgepoint Systems 4282 W. 590 S., S.L.C., UT 84123
801-261-1282 Toll Free Customer Service: 1-800-794-7425

interlinksupply
Interlink Supply 1-800-660-5803 www.InterlinkSupply.com

Resources

On-Line Free Technical Support



Quick Reference Guide Training for Commercial Carpet Cleaning

Self-Navigated, Interactive Computer Based Technical Training

Part # JS106



BRIDGEPOINT
SYSTEMS



Routine Maintenance

Routine Maintenance - All Fiber Types

1. Thorough Periodic Vacuuming

Thoroughly vacuum any areas designated as high traffic/high profile areas of the building. Use a commercially viable two motor upright vacuum like the **ProTeam 1500 or ProTeam 1500XP**. Use long, slow overlapping strokes to ensure as much dry particulate soil as possible.



2. Immediate Response to Spots and Spills

Check the areas to vacuum for any new spots or spills. Use appropriate procedures and detergents to remove these spots or spills as soon as they are noticed. A spill response program is a good way to help the custodial staff respond to spills quickly and effectively.



The **Bridgepoint Spotting Kit** keeps you prepared for every spot and spill.

Appearance Maintenance

Appearance (Interim) Maintenance - All Fiber Types

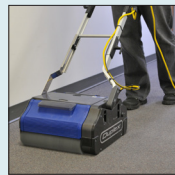
Thorough Pre-Vacuuuming

After thorough vacuuming is performed in the routine procedure, you are ready to clean the carpet with encapsulation.



Encapsulation procedure

- Mix one part **Encapuclean Green DS** to 32 parts of water or one part **Encapuclean** to 16 parts of water into the pump up, electric or battery powered pressure sprayer. For heavy soiling, mix one part or one part Encapuclean to 16 parts of water **Encapuclean Green DS** to 16 parts of water.
- Apply the ready-to-use solution as a mist in a consistent overlapping pattern. Use more solution only in heavily soiled areas.
- Agitate the **Encapuclean Green DS** or **Encapuclean** into the carpet with a **Brush Pro 17** or **20LM Machine** or **Duplex Agitation Machine**.
- Allow the cleaning solution to completely dry. Use an **Air-King** or **OmniDry 2.9amp** air mover to reduce drying time.
- Vacuum the carpet thoroughly at the next scheduled vacuuming interval.



Surface Hot Water Extraction Procedures

- Mix 4 ounces of **Powerpoint** with 5 gallons of water in your solution tank of your walk behind, self contained, or ride-a-long extractor.
- Make slow overlapping passes across the area of the carpet to be cleaned in accordance with your equipment manufacturer's directions.
- Take special precautions not to overwet the carpet and extend drying time. If cleaning results are not satisfactory, it is either time to restoratively clean the carpet or you need to increase Appearance Maintenance cleaning frequency.



Restorative Maintenance

Vacuum the carpet thoroughly before any level of hot water extraction procedure.

For medium to heavy soils.

- Pre-spray with 1 part **Flex** mixed with 8 parts of hot water.
- Agitate any heavier soiled traffic areas with a **Grandi Brush**, or **Brush Pro 17** or **20LM Agitation Machine**, or **Duplex Agitation Machine**.
- Extract with **Powerpoint Carpet Extraction Detergent**. In a portable extractor (box, walk-behind, self-contained, ride on) mix 2 ounces per 5 gallons of water. For truck-mount mix 1 quart to 5-gallon stock solution.

Carpets that are heavily soiled, or soiled with high amounts of oil and grease.

- Pre-spray with 1 part **Flex** mixed with 8 parts of hot water. Add two ounces of **Citrus Solv** to each mixed gallon.
- Agitate any heavier soiled traffic areas with a **Grandi Brush**, or **Brush Pro 17** or **20LM Agitation Machine**, or **Duplex Agitation Machine**.
- Extract with **Powerpoint Carpet Extraction Detergent**. In a portable extractor (box, walk-behind, self-contained, ride on) mix 2 ounces per 5 gallons of water. For truck-mount mix 1 quart per 5 gallons of stock solution.

Carpets made of olefin, (polypropylene) or triexta fiber.

- Pre-spray with one part **Traffic Slam Traffic Lane Cleaner** mixed with 32 parts hot water. For extreme soiling, mix **Traffic Slam** 1 part solution to 24 parts water and add 1 ounce of **Boost All**.
- Agitate any heavier soiled traffic areas with a **Grandi Brush**, **Brush Pro 17** or **20LM Agitation Machine**, or **Duplex Agitation Machine**.
- Extract using **EndZone Neutralizing Rinse**. In a portable extractor (box, walk-behind, self-contained, ride on) mix 4 ounces per 5 gallons of water. For truck-mount mix 1 quart to 5-gallon stock solution.

Restaurant Carpet, heavily soiled (high grease and oil content), synthetic carpet.

- Prespray with 1-2 ounces of **Power Break** mixed with 1 gallon of hot water.
- Agitate any heavier soiled traffic areas with a **Grandi**

Brush, **Brush Pro 17** or **20LM Agitation Machine**, or **Duplex Agitation Machine**.

- Extract using a portable extractor (box, walk-behind, self-contained, ride on) by mixing 2 ounces of **Powerpoint Carpet Extraction Detergent** with 5-gallons of water. For truck-mount extraction mix 1 quart of **Powerpoint Carpet Extraction Detergent** with 5-gallons of stock solution.

Commercial Wool Carpet

- Pre-spray with 1 part **ZonePerfect Carpet Pre-Spray** mixed with 32 parts of hot water.
- Agitate any heavier soiled traffic areas with a **Grandi Brush**, or **Brush Pro 17** or **20LM Agitation Machine**. Use commercial wool brush for **Brush Pro machine**.
- Extract with **EndZone Neutralizing Rinse**. In a portable extractor (box, walk-behind, self-contained, ride on) mix 2 ounces per 5 gallons of water. For truck-mount mix 1 quart to 5-gallon stock solution.

If the carpets require cleaning with Carpet & Rug Institute Seal of Approval Products

- Pre-spray with 1 part **ZonePerfect Carpet Pre-Spray** mixed with 32 parts of hot water.
- Agitate any heavier soiled traffic areas with a **Grandi Brush**, or **Brush Pro 17** or **20LM Agitation Machine** or **Duplex Agitation Machine**.
- Extract with **EndZone Neutralizing Rinse**. In a portable extractor (box, walk-behind, self-contained, ride on) mix 2 ounces per 5 gallons of water. For truck-mount mix 1 quart to 5-gallon stock solution.

For Green Seal® Cleaning Procedures and CRI SOA Approved Products

- Pre-spray with 1 part **Green Balance Carpet Pre-Spray** mixed with 32 parts of hot water. For heavier soiling, mix 1 part **Green Balance Carpet Pre-Spray** with 21 parts water.
- Agitate any heavier soiled traffic areas with a **Grandi Brush**, or **Brush Pro 17** or **20LM Agitation Machine** or **Duplex Agitation Machine**.
- Extract with **Green Balance Carpet Extraction Rinse**. In a portable extractor (box, walk-behind, self-contained, ride on) mix 2 ounces per 5 gallons of water. For truck-mount mix 1 quart to 5-gallon stock solution.



Helpful Hints

Pile Lifters

A pile lifter is designed to remove the deeply imbedded grit and dry soils from carpet. This is a powerful unit that has an extremely high suction combined with a large cylindrical brush that lifts, combs and brushes the carpet pile.



Encapuclean O₂

For carpets with a lot of coffee and beverage spills or that need brightening consider Encapuclean O₂.



Encapuclean w/ Maxim

For schools and daycare carpets, consider the stain prevention performance of Encapuclean with Maxim.



To increase speed and efficiency of prespray application consider:

Hydro-Force Inline Injection Sprayer



FlexiPro Battery Powered Sprayer



To reduce Dry Times and Downtime, consider:

Air King Air Mover



OmniDry 2.9 Amp Air Mover

